

PRO)))SOUND™

Acoustic Timber Slatted Panels

Installation Guide & Product Overview

Overview

Sound absorption can be used in any space where reverberation and echo is creating a problem with speech clarity and general noise volume.

High performing ProSound Acoustic Timber Slatted Panels are engineered to deliver the functionality of minimising reverberation and reflected sound whilst elevating the aesthetics of any space.

Acoustic Timber Slatted Panels offer a combination of natural beauty with durability, versatility and excellent sound absorption. With a choice of 5 elegant wood veneer finishes to suit the design of your room, the panels are used on walls and ceilings to create a high quality decorative and improved acoustic environment.

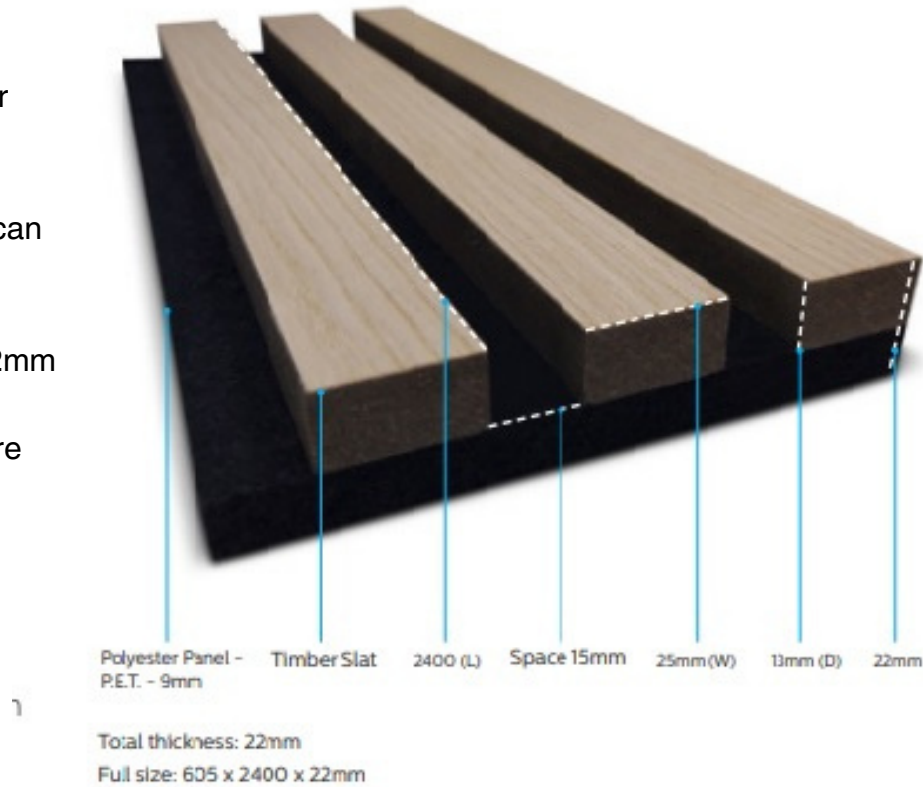


Why Use ProSound Acoustic Wall Panels

- **Excellent sound absorption performance** - dramatically improve the room acoustics within any given space
- **5 wood finishes** - high quality veneer finishes to add design flair and enhance the visual appeal of any space
- **Aesthetic appeal** - outstanding combination of contemporary design and sound absorption
- **Straightforward DIY installation** - saving you time and money, without the need of extra labour costs
- **Fast delivery lead times** - manufactured in the UK (lead times 1 - 2 days)

Features

- A two layered panel featuring a sound absorbing polyester substrate with a facing timber slat
- Only 22mm thick
- Black sound absorbing polyester layer 9mm (fixed colour)
- Timber slat 13mm, 5 colour choices (can combine colour ranges)
- Fixed sizes of 605mm x 2400mm x 22mm
- 5mm overlap for seamless fitting where boards join



Performance

- 40mm Air Gap (Class A - NRC 0.95)
- Direct To Wall / Ceiling (Class D - NRC 0.65)
- Acoustic mineral wool can be added in the void (air gap) to improve performance

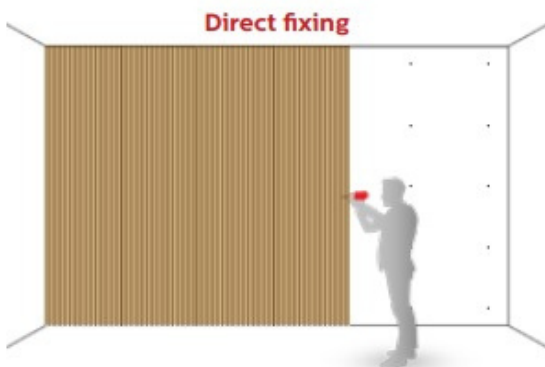
Frequency (Hz)	125	250	500	1000	2000	4000	Sound Absorption Class
ProSound Timber slat - Direct to wall	0.05	0.10	0.25	0.65	1.00	0.90	Class D
ProSound Timber slat - 40mm Airgap	0.25	0.80	1.00	1.00	1.00	0.90	Class A

Installation Instructions For Walls

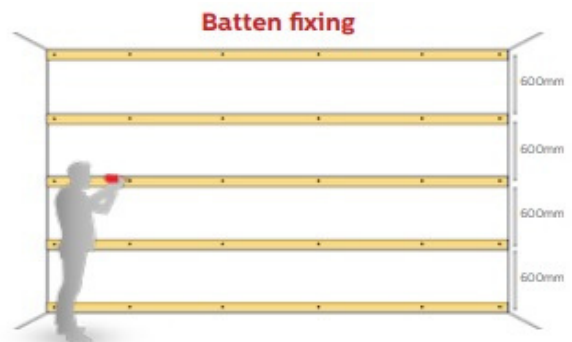
Tools / Accessories Required:

- Suitable Fixings / screws for fixing the panels to the wall (the recommendation is to use 35mm black screws, 16 screws per panel)
- Battery Combi Drill
- Circular Saw (fitted with fine tooth blade) / Hand saw

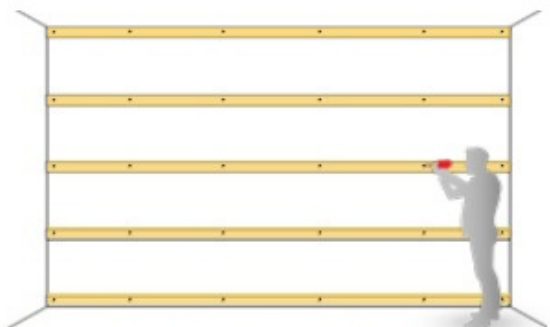
Start by preparing the wall. Clean the wall and remove any screws, nails and other obstacles



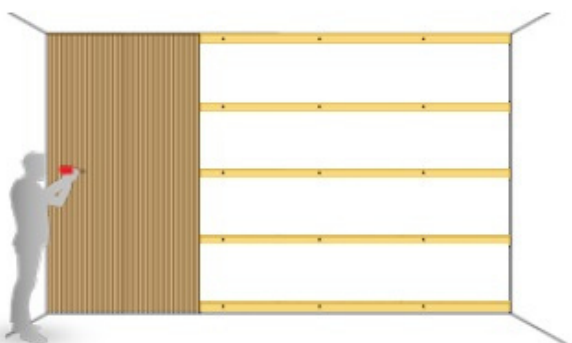
Mount the panel on the wall by drilling the screws (35 mm.) through the polyester and into the wall. We recommend 16 screws per panel.



Place the battens as per the above spacing.



Battens create the air gap once the panels are fitted



Mount the panel on the wall by drilling the screws (35 mm.) through the polyester and into the battens. We recommend 16 screws per panel.

Note: When opening the boxes, please open the box from the edges and not the face.

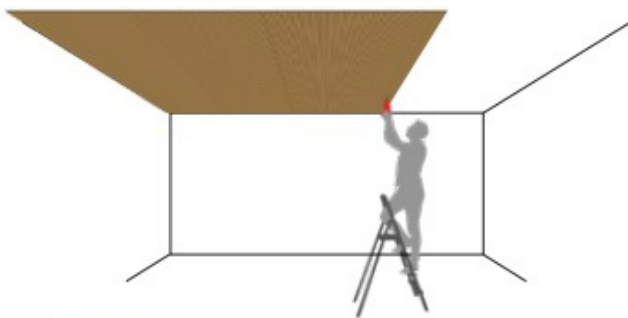
Installation Instructions For Ceilings

Tools / Accessories Required:

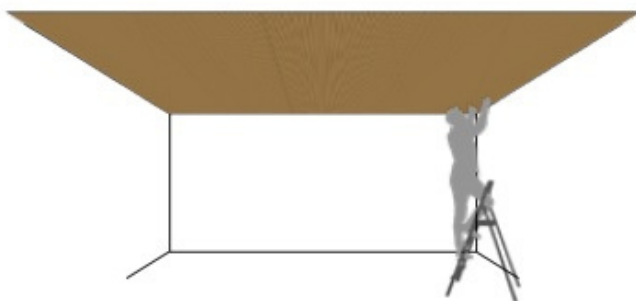
- Suitable Fixings / screws for fixing the panels to the wall (the recommendation is to use 35mm black screws, 16 screws per panel)
- Battery Combi Drill
- Circular Saw (fitted with fine tooth blade) / Hand saw

Start by preparing the ceiling. Clean the ceiling and remove any screws, nails and other obstacles

Direct fixing



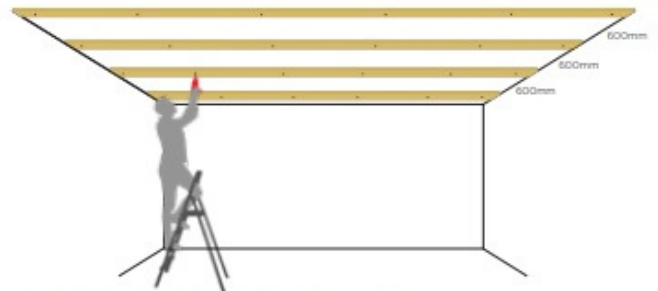
Directly fitted panels.



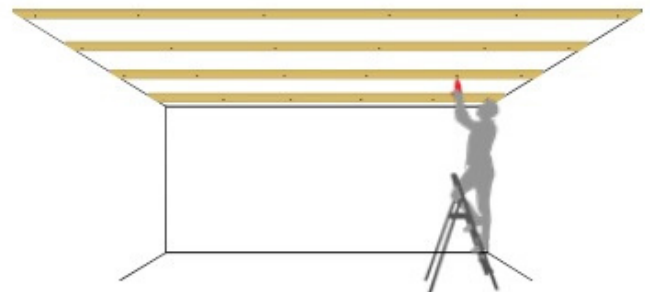
Mount the panel on the ceiling by drilling the screws (35 mm.) through the polyester and into the ceiling. We recommend 16 screws per panel.



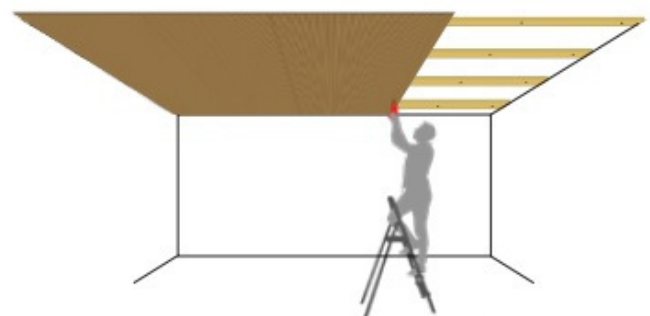
Batten fixing



Place the battens as per the above spacing.



The battens create an air gap once the panels are fitted which helps with the acoustics.



Mount the panel to the battens by drilling the screws (35 mm.) through the polyester and into the wall. We recommend 16 screws per panel.

Specification

- **Size:** 605mm x 2400mm x 22mm
- **Performance:** 40mm Air Gap (Class A - NRC 0.95) Direct To Wall / Ceiling (Class D - NRC 0.65)
- **Weight:** Acoustic Timber Slatted Panels weigh approx. 13kg per panel
- **Cleaning:** Light dirt marks can be removed by using a damp cloth. A small area should be tested first before doing the full panel to ensure that the timber is not adversely affected
- **Fire:** Standard slatted panel fire resistance class B-s1, d0 on polyester backing.
MDF timber slat is non fire rated

(On request fully fire rated panels are available where the MDF achieves C-s1,d0 fire rating)

Colours

- **5 Veneer Finishes:**

- Light Oak
- Smoked Oak
- Grey Oak
- Charcoal Grey
- Walnut



ProSound Acoustic Timber Slatted Panels
Images



PRO)))SOUND™

Acoustic Timber Slatted Panels

Exclusively available through The Soundproofing Store

